



Morgans

PROPERTY

69 St. Johns Drive, Dunfermline, KY12 7TL

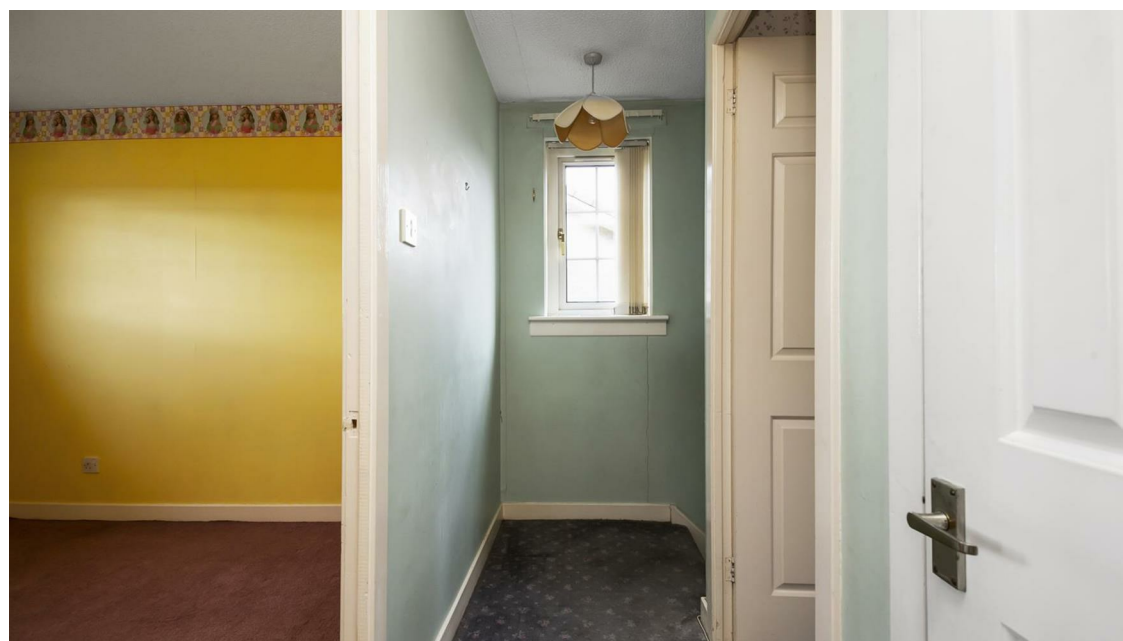
Offers Over £199,950







Well appointed three bed detached villa in the sought after Garvock area of town. The property is generous throughout and briefly comprises entrance vestibule, lounge, dining kitchen, three bedrooms and bathroom. There is good storage and attic. The property is keenly priced and early entry is available. Private gardens to the front and rear with driveway. The gardens are enclosed providing a child and pet safe environment. On the upper level there are nice un-spoilt views over town and towards the Forth Bridges. The subjects are double glazed with gas central heating.





LOCATION

The ancient capital of Dunfermline won its bid to have official city status in May 2022, as part of the civic honours competition to celebrate Queen Elizabeth's platinum jubilee. The honour was officially conferred by King Charles in a ceremony in Dunfermline city chambers on 3rd October 2022. The Royal Burgh is of considerable historic interest and is the resting place of King Robert the Bruce. Carnegie's Birthplace museum, the Abbey and Abbot House also reflect the historic interest of the city, whilst recent developments have seen Dunfermline move into the modern era. Dunfermline is located approximately five miles from the Forth bridges and is therefore particularly popular with commuters to Edinburgh and many parts of the central belt with easy access to the M90 motorway with its direct links to Edinburgh, Perth, Dundee and across the Kincardine Bridge by way of motorways to Stirling, Glasgow and the West. Dunfermline benefits from a full range of shops, social and leisure facilities and educational establishments associated with a modern city. The local railway stations provide regular services to Edinburgh with rail links to other parts of the UK. There are also regular and convenient bus services both local and national with bus stations available in the centre of Dunfermline and park and ride services available from Halbeath and Inverkeithing.

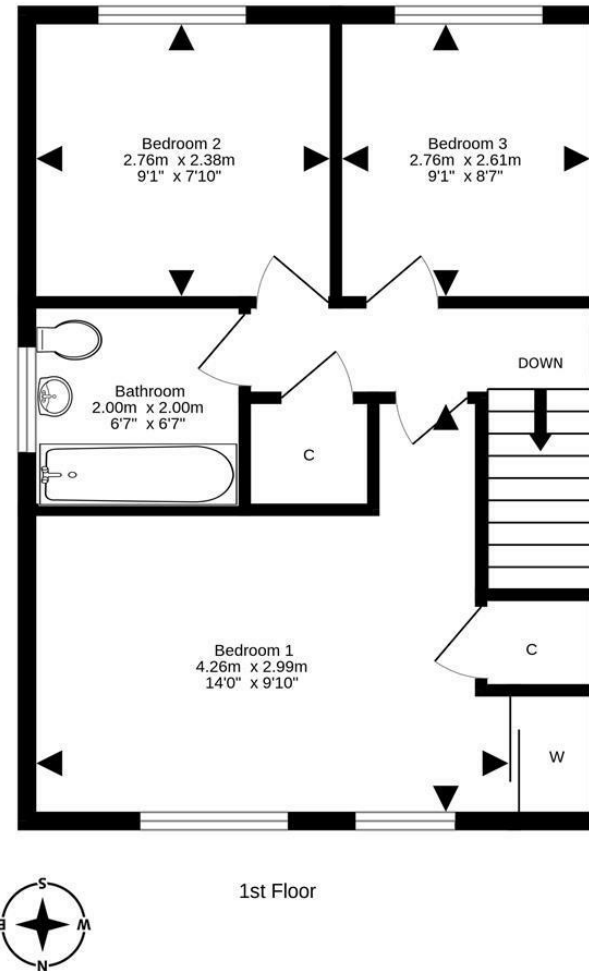
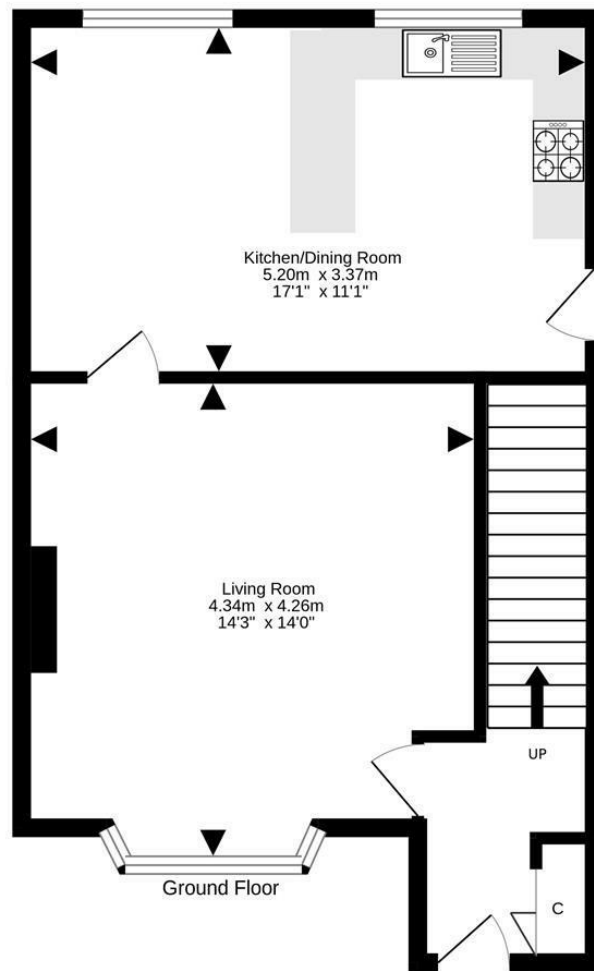
EXTRAS INC. IN SALE / AGENTS NOTE

All floor coverings, blinds, bathroom and light fittings together with integrated appliances.

From 1st February 2022, residential properties in Scotland are required by law to have installed a system of inter-linked smoke alarms, carbon monoxide detectors and heat detectors (the "inter-linked system"). No warranty is given that any interlinked system has been installed in this property and interested parties should make their own enquiries. The owner will not warrant the working order of the fixtures and fittings or appliances which are included in the sale price or white goods.







For details of the total internal floor area, please refer to the property's Home Report. This plan is for illustrative purposes only and should be used as such by a prospective purchaser.
Made with Metropix ©2023



SOLICITORS | PROPERTY

33 East Port, Dunfermline, Fife, KY12 7JE

Tel: 01383 620222 Fax: 01383 621213

www.morganlaw.co.uk



espc

rightmove

Zopla.co.uk

onTheMarket.com

s1homes.com



AGENTS NOTE These particulars do not form part of any contract and the statements or plans contained herein are not warranted nor to scale. Approximate measurements have been taken by electronic device at the widest point. Services and appliances have not been tested for efficiency or safety and no warranty is given as to their compliance with any Regulations. No movable items will be included in the sale.